

December 31, 2016

DONOR INVESTMENT POOLS

The Community Foundation of Shelby County provides donors with the option to invest in either a Conservative, Balanced, or Growth Pool. Each Pool's investment objectives, target allocations, and risk/return characteristics differ.

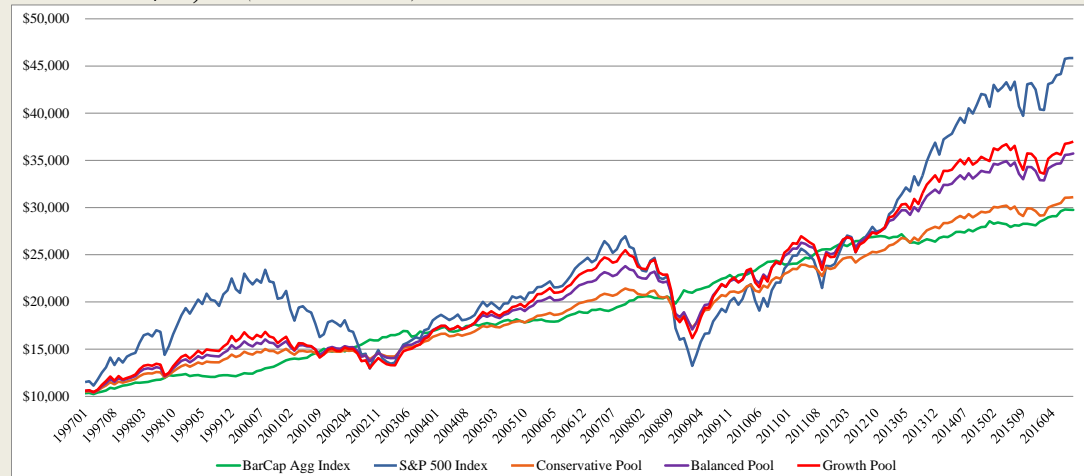
Asset Allocation

	<i>Conservative Pool</i>	<i>Balanced Pool</i>	<i>Growth Pool</i>	<i>S&P 500 Index</i>	<i>Barclays Aggregate Index</i>
US Large Cap Equity	20%	25%	30%	100%	-
US Small-Mid Cap Equity	5%	10%	10%	-	-
International Equity	10%	15%	25%	-	-
Tactical Asset Allocation	5%	10%	15%	-	-
Fixed Income	45%	35%	17.5%	-	100%
Cash	15%	5%	2.5%	-	-

Risk/Return Characteristics (1/1/1997-12/31/2016)

	<i>Conservative Pool</i>	<i>Balanced Pool</i>	<i>Growth Pool</i>	<i>S&P 500 Index</i>	<i>Barclays Aggregate Index</i>
Investment Objectives	Principal preservation targeting modest levels of capital appreciation and income.	Balance of capital appreciation and principal preservation.	Long-term capital appreciation.	-	-
Annualized Return¹	5.9%	6.5%	6.6%	7.7%	5.3%
Standard Deviation²	5.7%	8.2%	10.7%	15.3%	3.4%
Maximum Drawdown³	-20.3%	-30.2%	-39.6%	-51.0%	-3.8%

Growth of \$10,000 (1/1/1997-12/31/2016)



The hypothetical \$10,000 investment chart is plotted monthly from 1/1/1997-12/31/2016, and includes reinvestment of dividends and capital gains

The CFSC follows a Statement of Spending and Investment Policy approved by its Board of Trustees. It provides basic guidelines to balance the CFSC goals to build community capital for future use with the corresponding obligation to support current and future community needs.

A seven member Investment committee reviews investment pool composition and experience quarterly and recommends enhancements to the Board of Trustees.

CFSC has retained an independent investment consultant for oversight of its assets. Hartland is a premier independent investment advisory firm located in Cleveland, Ohio.

Current performance may be lower or higher than the performance shown above. Fund returns reflect the reinvestment of all income and dividends. The historical Pool returns are comprised of representative indices for Cash (Merrill Lynch 91-Day T-Bill Index), US Large Cap Equity (S&P 500 Index), US Small-Mid Cap Equity (Russell 2500 Index), International Equity (MSCI EAFE Index), Tactical Asset Allocation (HFRI Fund of Funds Index), and Fixed Income (BarCap Aggregate Index).¹ Return expressed as a time-weighted annual percentage. ² Historical deviation of returns from the mean. ³ Historical peak-to-trough decline during a specified period. All returns are gross of fees. Past performance is no guarantee of future results.